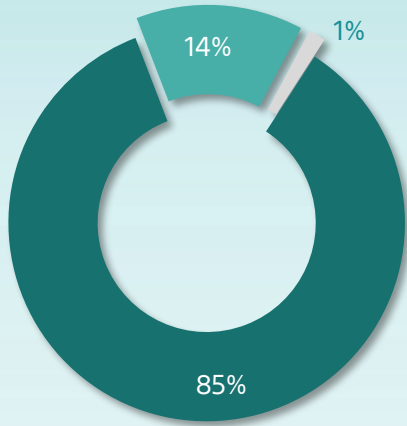
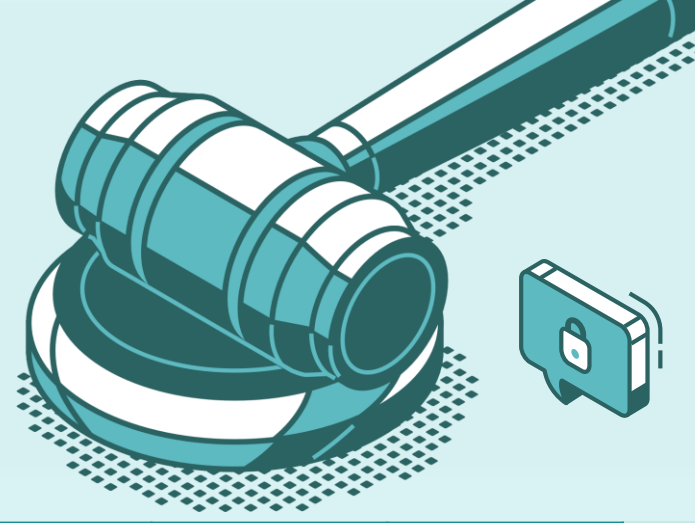


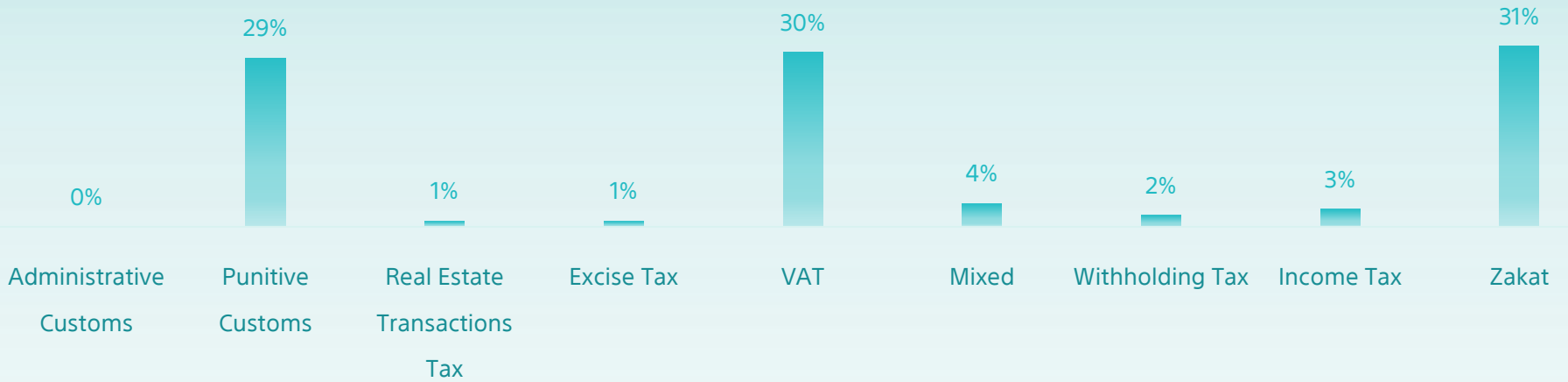
All Cases Report

Until Feb 2023



Initial Appeal Reconsider

Classification	Initial	Appeal	Reconsider	Total
Zakat	37,593	8,609	1,065	47,267
Income Tax	3,269	876	67	4,212
Withholding Tax	1,884	681	34	2,599
Mixed	4,481	1,203	87	5,771
VAT	39,743	6,208	687	46,638
Excise Tax	671	177	12	860
Real Estate Transactions Tax	1,105	110	13	1,228
Punitive Custom	41,329	2,936	149	44,414
Administrative Customs	341	118	15	474
Total	130,416	20,918	2,129	153,463



Top cases classification / type



Fine (VAT)
12%



Tax Assessment-
Discretion (Zakat)
15%



Tax Assessment -
Accounts (Zakat)
16%



Tax Return & Fine (VAT)
9%



Disposing of a restricted cleared merchandise
with a pledge not to dispose of.
(Customs)
19%

